

IsoFlux™ Circulating Tumor Cell (CTC) Enumeration Kit

LIQUIDBIO PART NUMBER

910-0093

DESCRIPTION

The IsoFlux Circulating Tumor Cell (CTC) Enumeration Kit is a complete reagent kit for detection of CTCs from biological samples(whole blood, fractionated blood, ascites,etc.). It contains antibodies and reagents for immunofluorescence staining of cells to define CTCs as Cytokeratin+, CD45-, nucleated, intact cells.

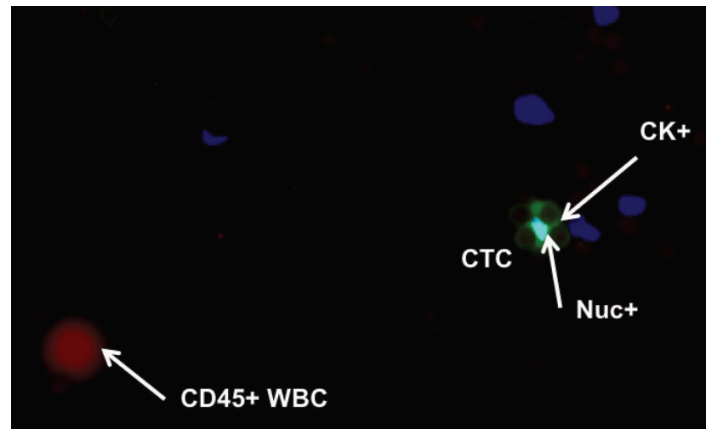


For use with cellular samples enriched with the IsoFlux System.

For research only. Not intended to treat or diagnose any disease.

IN THE BOX

- Fixative solution(25mL,store protected from light at 4°C)
- Normal donkey serum(10mL,store freeze-dried powder at 2-8°C;-20°C after reconstitution)
- TritonX-10010% Solution (10mL,store at room temperature)
- Mounting Medium (store protected from light at-20°C)
- Rabbit Anti-CD45 Primary Antibody (100µg,store at 4C for up to 6 weeks; -20°C for long term storage)
- Donkey Anti-Rabbit Cy™ 3-conjugated Secondary Antibody (0.5mg,store freeze-dried powder at 2-8°C; protected from light at -80°C after reconstitution)
- Anti-Cytokeratin FITC-conjugated Antibody, Human (1mL,store protected from light at 4°C)
- Hoechst 33342(100mg,store protected from light at -20 to 4°C)



SPECIFICATIONS

- Number of samples: processes up to 200 samples (depending on usage habits)
- Shelf life: 6 months

ORDERING INFORMATION

Contact orders@liquidbio.co to order.

Liquidbio LLC
 San Francisco, CA USA
www.liquidbio.co
info@liquidbio.co